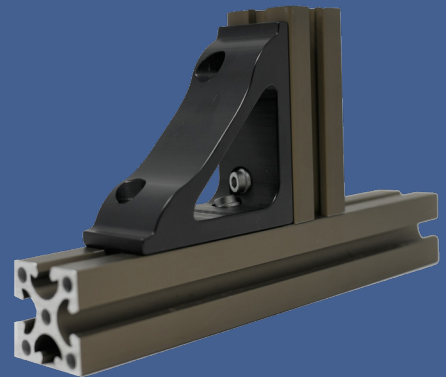


ANGLE-LOCK™



WORK PLATFORMS

Our patented ANGLE-LOCK™ fastening system creates mechanically locked joints, optimizing the strength of each profile. Higher grade (12.9) fasteners allow the bolts to stretch slightly when tightened to specification, creating a spring effect which dramatically improves resistance to failure.



ABOUT US

At Controlled Dynamics, our mission is to provide a more versatile alternative to traditional t-slot structural aluminum systems - further expanding the potential of aluminum as the preferred material for structural applications. We realize our mission by manufacturing precision engineered structural aluminum products that are the epitome of quality, strength, and value.

WHY CHOOSE US?

- ✓ **FASTER ASSEMBLY**
- ✓ **AN ENGINEERED SOLUTION**
- ✓ **LOWER COST OF OWNERSHIP**

CABINETS & ENCLOSURES

Our profiles and components are specifically engineered for maximum strength and performance. Lightweight and highly configurable, the Controlled Dynamics system assembles, disassembles, and moves with ease, allowing for effortless customization and repurposing.



CARTS

Superior, Type II Architectural Class I (18-micron thickness) anodizing on profiles provides the highest level of protection available to resist outdoor and industrial hazards such as scratches, corrosion, and UV fading.



CONTACT US AT
SALES@CONTROLLEDDYNAMICS.COM